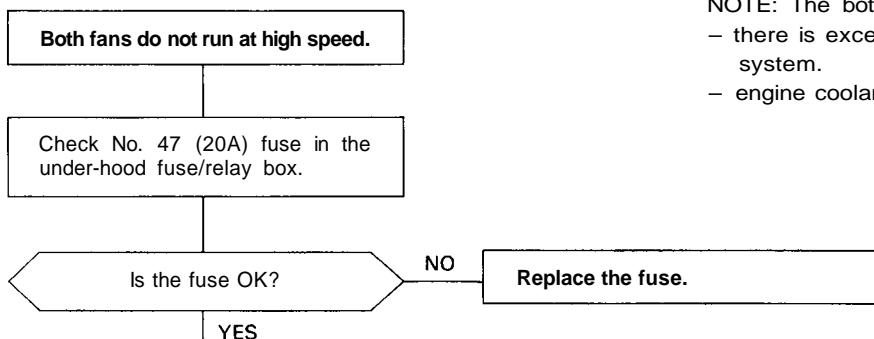


Troubleshooting

Flowchart — Both Fans High Speed

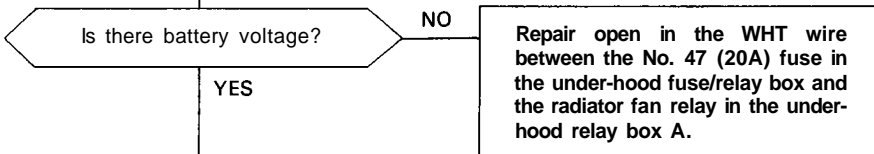
NOTE: The both fans should run at high speed when;

- there is excessive high – side pressure in the A/C system.
- engine coolant temperature exceeds 194°F (90°C).

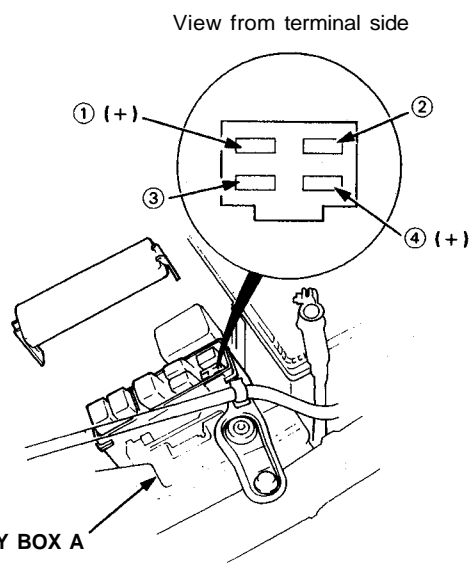


Remove the radiator fan relay from the under-hood relay box A.

Measure voltage between the No. ① terminal (+) and body ground (-).

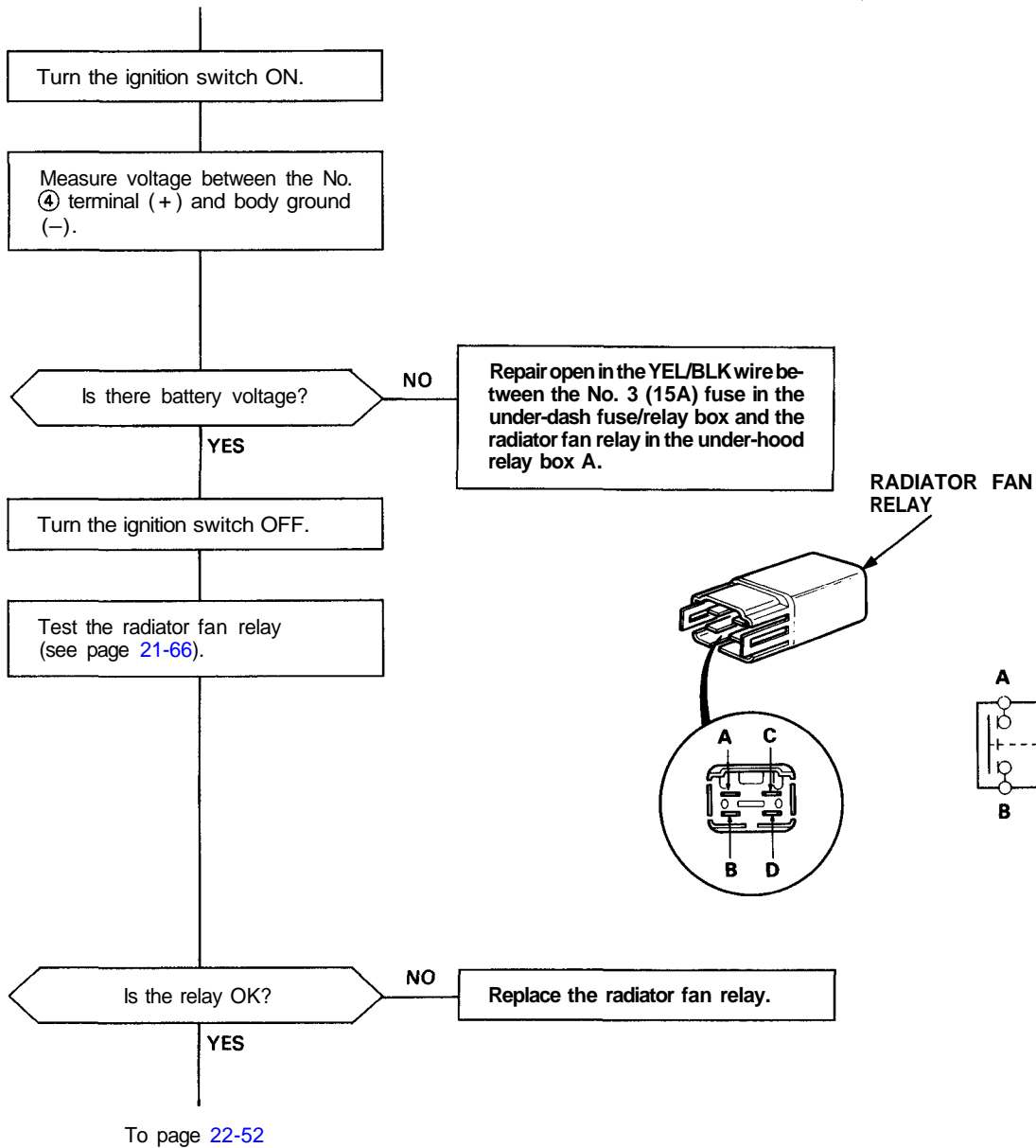


To page 22-51





From page 22-50



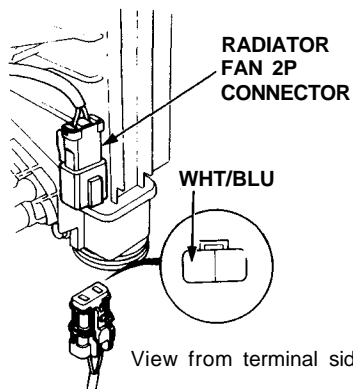
(cont'd)

Troubleshooting

Flowchart — Both Fans High Speed (cont'd)

From page 22-51

Disconnect the 2P connector from the radiator fan.



Check for continuity in the WHT/BLU wire between the No. ③ terminal of the radiator fan relay connector and the radiator fan.

Is there continuity?

NO

Repair open in the WHT/BLU wire between the radiator fan relay in the under-hood relay box A and the radiator fan.

YES

Remove the radiator fan main relay from the under-hood relay box A.

Turn the ignition switch ON.

Measure voltage between the No. ⑤ terminal (+) and body ground (-).

Is there battery voltage?

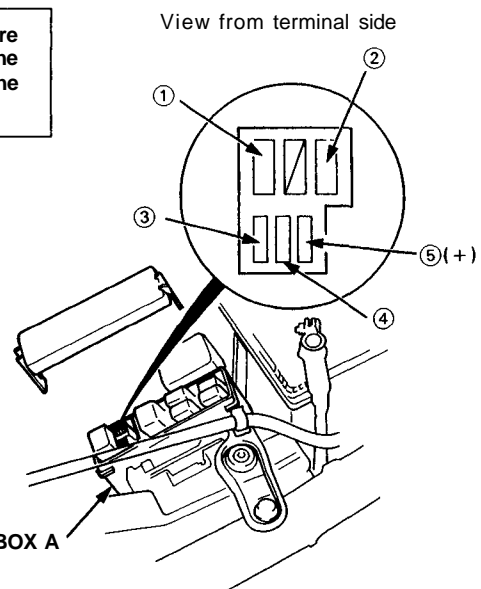
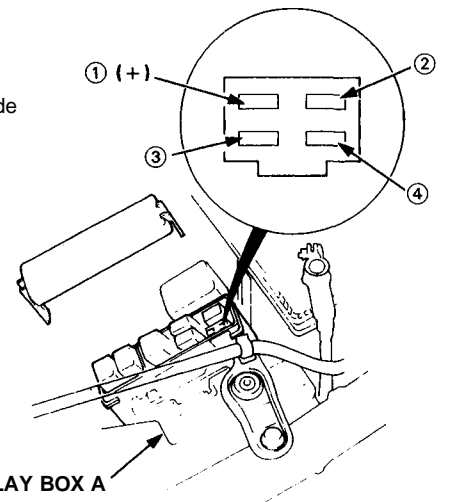
NO

Repair open in the YEL/BLK wire between the No. 3 (15A) fuse in the under-dash fuse/relay box and the radiator fan main relay in the under-hood relay box A.

YES

Turn the ignition switch OFF.

To page 22-53





From page 22-52

Check for continuity in the BLK wire between the No. ① terminal of the radiator fan main relay connector and body ground.

Is there continuity?

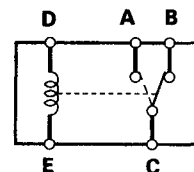
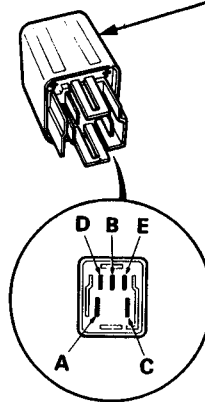
NO

Check for an open in the BLK wire between the fan radiator fan main relay in the under-hood relay box A and body ground.
If the wire is OK, check for poor ground at G152.

YES

Test the radiator fan main relay (see page 21-66).

RADIATOR FAN MAIN RELAY



Is the relay OK?

NO

Replace the radiator fan main relay.

YES

Reinstall the radiator fan and radiator fan main relays into the under-hood relay box A, and reconnect the 2P connector to the radiator fan.

To page 22-54

(cont'd)

Troubleshooting

Flowchart — Both Fans High Speed (cont'd)

